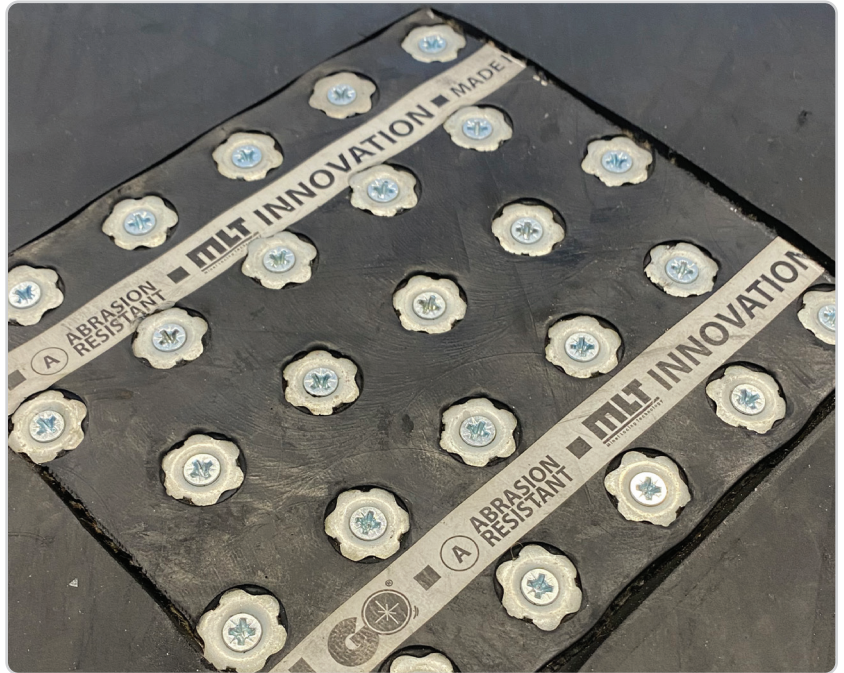


FIX'N GO® Rip Repair System

Repair Belt Rips and Punctures with This Easy Solution, Any Time in Any Environment

When a belt rip or puncture occurs, your operation doesn't have time to wait for a new belt or deal with costly belt repairs. That's why Fix'N Go is the perfect solution for quick and permanent belt rip or puncture repair to get your belt back up and running with limited downtime. Fix'N Go can be installed regardless of conveyor location and weather conditions, day or night.



Features

- Available in Abrasion-Resistant (AR) and Heat Resistant (withstands temps up to 340°F (170°C))
- Flexible and resistant to elongation
- Quick to install, permanent repair
- Available with stainless steel or galvanized steel screws
- Specially-designed self-drilling, self-tapping screws preserve the integrity of the belt by passing between the carcass threads without cutting them
- Compatible with pulley diameters as small as 8" (200 mm)

Benefits

- Can be installed quickly and easily by on-site crew, using a drill or 1/4" impact driver
- Vulcanized rubber with fabric plies offers high protection against friction, wear, and stretching
- Can be used on all multi-ply and mono-ply belts up to 850 PIW
- Compatible with belt cleaners and other conveyor components
- Can be used on longitudinal rips, crosswise rips, belt edge rips, holes and tears, and even when two belts need to be spliced together longitudinally

Belt Preparation Tools



The **Fein Belt Skiver** is an oscillating multi-tool that quickly removes rubber from the edge or inside of the belt using vibration without damaging belt plies or carcass.

- An assortment of blades (straight blades, blades for belt ends and belt centers) are available. The blades are designed for 1/8" to 3/8" (2.5 mm to 10.5 mm) thick belt covers
- Available in cordless/battery-powered and corded (110 Volt) options
- Features 6 oscillating frequency settings



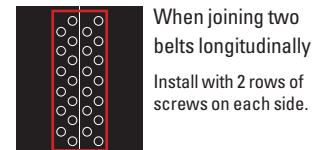
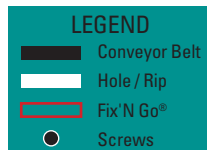
The **PS15 Hot Knife Belt Skiver** is a high-quality belt skiving tool that is perfect for preparing belts for Fix'N Go® installation.

- Skives belt top covers from 1/16" to 5/8" (1.5 mm to 16 mm) thick
- Spring-loaded clamps and two locking screws make for easy adjustments
- Ergonomically-designed handle for comfort
- Features 4 heat settings and an "off" button

FIX'N GO® Rip Repair System

In Which Situations Can Fix'N Go® be Used?

1. Longitudinal rip
2. Crosswise rips under 50% of the belt width. On each side, 20% of the belt width must be intact.
3. Belt edge damage under 20% of the belt width
4. Holes up to 4" wide in the edge of the belt. (If more than 1", fill the hole with a piece of used belt before Fix'N Go installation.)
5. Holes up to 8" wide
6. Splicing of two belts together in the longitudinal direction (must have two rows of screws on each side)



Ordering Information

Fix'N Go® *			
Length		Rubber Compound	Screws (with washers)
in.	m		
79	2	Abrasion Resistant	300 Galvanized Screws
79	2	Stainless Steel (AR Rubber w/Stainless Steel Inserts)	300 Stainless Steel Screws
79	2	Heat Resistant (Rated up to 340°F/170°C)	300 Galvanized Screws
787	20	Abrasion Resistant	3000 Galvanized Screws
787	20	Stainless Steel (AR Rubber w/Stainless Steel Inserts)	3000 Stainless Steel Screws
787	20	Heat Resistant (Rated up to 340°F/170°C)	3000 Galvanized Screws

Fein Oscillating Belt Skiver	
Description	Ordering Number
110V Fein Skiver	2991356
Cordless Fein Skiver Kit	2991688
Swerved Blade	2991272
Straight Blade	2991447
1/4" Belt End Blade	2991176
3/16" Belt End Blade	2991366
1/8" Belt End Blade	2991185
3/8" Belt Center Blade	2991478
5/16" Belt Center Blade	2991482
1/4" Belt Center Blade	2991404
3/16" Belt Center Blade	2991405
1/8" Belt Center Blade	2991726

PS15 Hot Knife Skiver	
Item	Description
PS15 Hot Knife Skiver	Includes tool and 20 C6/W6 replacement blades
PS15 Replacement Blades	Pack of 20 C6/W6 replacement blades

* Fix'N Go® is 6-1/4" (160mm) wide. Available in 79" or 787" (2- or 20-meter) lengths. Screw size and quantities can be selected as needed. If not selected, 79" (2-meter) rolls come with 150 5x12 screws and 150 5x14 screws. The 787" (20-meter) rolls come with 1,500 5x12 screws and 1,500 5x14 screws. All screws come with washers attached.

Visit www.flexco.com for other Flexco locations and products, or to find an authorized distributor.

